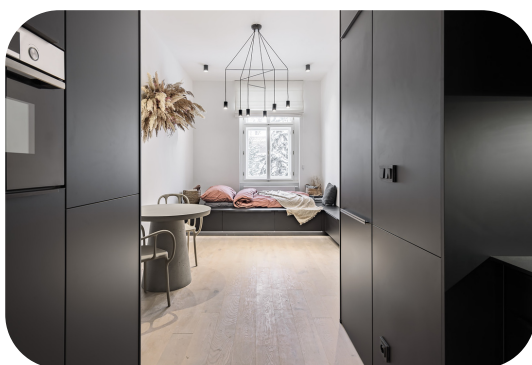




# Apartment Studio

Praha 2 - Nusle, Lumírova

PRICE	PROPERTY	CODE	FLOOR	AREA	TERRACE	PARKING
Sold	ID 787	3.2	3/5	30 m <sup>2</sup>	No	No



The exclusive renovated apartment is part of a unique residential project of a loggia house in a historic building in Prague's Nusle, just below the walls of the Vyšehrad fortress.

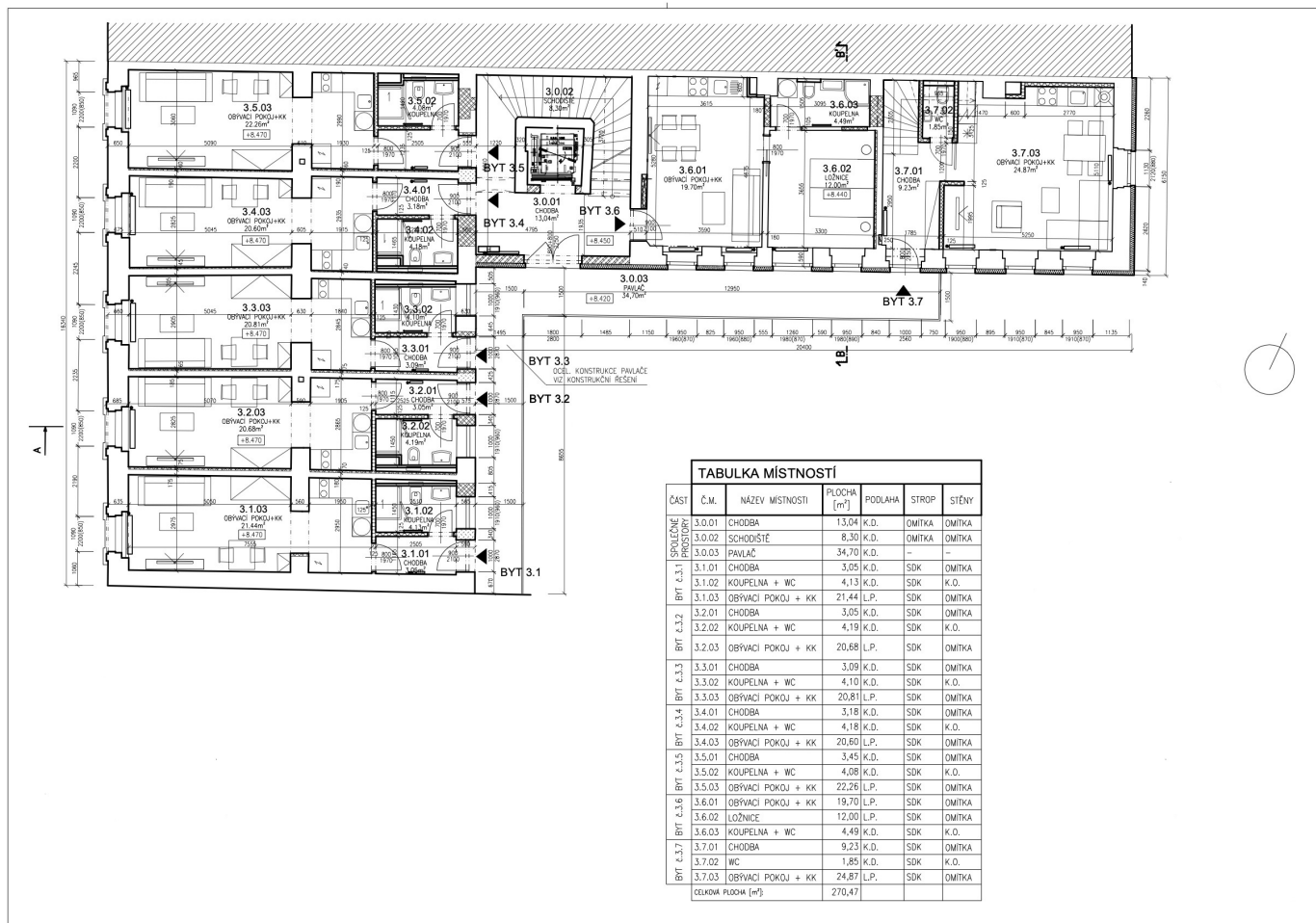
It provides the best for a quiet life in the wider center of the capital. The apartment located on the third floor has a usable area of 30 m2.

After entering the apartment, you will find yourself in the hallway, from which there is access to the bathroom and airy and well-lit living room with kitchenette. The windows of the apartment are facing the street. Standards include double-layer wooden floors, ceramic bathroom tiles, windows with frames made of wooden euro profiles glazed with insulating triple glazing and wooden fire-proof entrance doors for EI30 fire-resistant apartments.

Excellent accessibility and full civic amenities, the house is located 10 minutes walk from the metro station Vyšehrad, there are also a number of bus and tram stops. You can reach the city center by car in 10 minutes, by public transport in a quarter of an hour. Within easy reach you will find supermarkets, schools, kindergartens, doctor's offices, post office, offices, but also bars, cafes and restaurants. The entrance to Vyšehrad with the ruins of the famous castle, the famous Slavín Cemetery, the Basilica of St. Peter and Paul, as well as green orchards and a pub, is less than a 5-minute walk away. In the immediate vicinity are also Podolské and Rašínovo embankments of the Vltava and Folimanka Park.

The listed price does not include commission. For complete information about the project and vacant housing units, do not hesitate to contact us.

Lumírova 102/27  
128 00 Praha 2 - Nusle



**Lucie Dušková**  
Real Estate Manager

+420 731 544 904  
duskova@homeland.cz