



Apartment 1 Bed

Praha 3 - Žižkov, Křišťanova

PRICE	PROPERTY	AREA	TERRACE	PARKING	EPC
Sold	ID 577	48 m ²	No	No	C



Modern 1.bedroom apartment on the ground floor of a completely refurbished traditional building with a new lift on the border of Žižkov and Vinohrady, a few minutes walk from metro station Flora and Atrium Flora shopping center.

The exterior and interior of the house were reconstructed with regard to the historical significance of the elements from the time of its origin. All standards of the apartment and common areas are of top quality and perfectly reflect the needs of modern living in the center of Prague.

The apartment consists of living room with kitchenette, a bedroom, an entry hall, a bathroom and a toilet. Residents of the apartment can use a common pram and parking is available in front of the house, in the blue zone of Prague.

The interior was designed by a well-known and talented czech designer. Features include wooden flooring, large italian tiles, wooden windows, cassette security entrance doors, interior door of height 210 cm, branded italian sanitary ware, CCTV system, LED ceiling lighting system in plasterboard ceilings, video entry phone. Heating is provided by the central boiler room in the house.

Quiet location in the center of Prague, which combines a unique genius loci with full amenities and all the comforts of living in the city center. In the immediate vicinity of the house are countless shops (including the shopping center Atrium Flora with multiplex cinema), restaurants and other places for relaxation and active recreation. There are plenty of schools, kindergartens and medical facilities. The nearby Rieger Gardens and many other smaller parks, playgrounds and public areas can be used for relaxation. There are also several sports facilities in the area, including the park Rajská zahrada. Location in the city center ensures perfect connection to public transport, near are two metro stations (Flora and George of Podebrady) as well as numerous tram and bus stops.

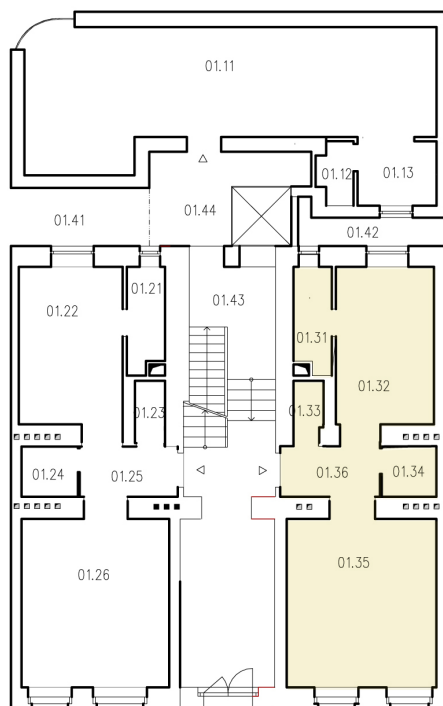
Křišťanova
130 00 Praha 3 - Žižkov

Bytový dům Křišťanova

1:50 - A1

± 0,000 = +0,000 stávající

1.NP - Půdorys



LEGENDA MÍSTNOSTI

Č.M.	NÁZEV MÍSTNOSTI	PLOCHA [m ²]
	ATELIER Č.1.1	
01.11	Pokoj+KK	44.24
01.12	WC	1.80
01.13	Koupehna	4.36
	PLOCHA CELKEM:	50.40
	BYT Č.1.2	
01.21	Koupehna	3.33
01.22	Pokoj+KK	14.89
01.23	WC	1.61
01.24	Komora	2.43
01.25	Předsíň	4.49
01.26	Pokoj	21.98
	PLOCHA CELKEM:	48.73
	BYT Č.1.3	
01.31	Koupehna	3.33
01.32	Pokoj+KK	13.94
01.33	WC	1.54
01.34	Komora	2.35
01.35	Pokoj	22.30
01.36	Předsíň	4.52
	PLOCHA CELKEM:	47.98
	SPOLEČNÉ PROSTORY	
01.41	Dvůr	7.42
01.42	Dvůr	3.84
01.43	Chodba	36.64
01.44	Dvůr	7.85
	PLOCHA CELKEM:	55.75



Filip Kubus
Real Estate Manager

+420 731 544 904
kubus@homeland.cz