



Apartment 2 Bed

Prague 10 - Žižkov, Ramonova

PRICE FROM	PROPERTY	CODE	FLOOR	AREA	TERRACE	PARKING
Sold	ID 1365	B.08.01	8/11	87 m ²	10 m ²	2



Superior apartment with two balconies with a two-room layout for sale in Prague 10 - Žižkov. The premium apartment with a northwest orientation is part of a unique residential complex surrounded by a two-hectare urban forest on the border of Strašnice, Žižkov and Vinohrad near the Želivského metro station.

The interior of the apartment located on the seventh floor consists of a sunny living room with preparation for the installation of a kitchen unit and access to the balcony, two bedrooms, one of which has access to the second balcony, an entrance hall, a separate toilet, a storage room and a bathroom with a toilet and a bathtub. Cellar and garage parking are available for an additional fee, the price of parking is CZK 600,000 for one space, the price of the cellar is CZK 55,000/m2.

The standards are characterized by the high quality of the materials used with an emphasis on functional design. They include wooden three-layer floors in oak, security fire entrance doors with steel frames, white rebate interior doors, plastic windows, ceramic bathroom tiles, white bathroom fixtures, intelligent control system, underfloor heating. In addition, all buildings meet the strict criteria of the LEED PLATINUM environmental certification.

Excellent transport accessibility by public transport, the complex is located directly at the busy transport hub Želivského with a metro station and several bus and tram stops. The ring road is just a 10-minute drive away. There are also all civic amenities in the wider city center and the Atrium Flora shopping center.

The complex, which is created by world-famous architectural studios, will be surrounded by a newly planted city forest park containing over 2,200 trees and 3 km of sidewalks connected to the city's cycle paths. The complex will also include a number of services, shops, restaurants and cafes lining the central pedestrian boulevard or a cultural and social center with a multifunctional hall, which will become the new seat of the PKF Symphony Orchestra - Prague Philharmonia.

Available from Q4/2024. For more information about the project and other free units, do not hesitate to contact us.



Ramonova 3466/2
100 00 Prague 10 - Žižkov



Všechny údaje o stavbě jsou uvedeny v technické specifikaci
všechny údaje o stavbě jsou uvedeny v technické specifikaci
všechny údaje o stavbě jsou uvedeny v technické specifikaci
VERZE 10/2020

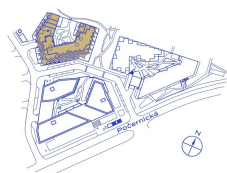
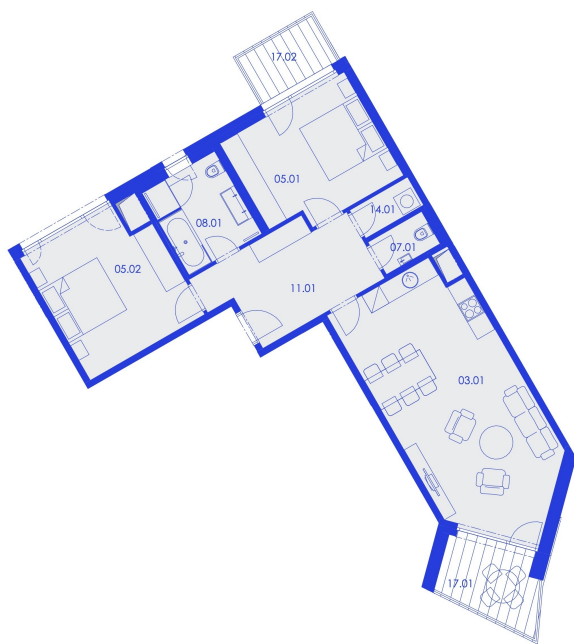
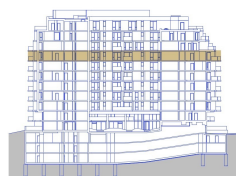


schéma projektu – budova Gamma



schéma umístění bytu



řez objektem



RG.B.08.01 Byt

91,1 m² + 9,8 m²

plocha + terasy/balkony
3+KK | 8. NP

č. m.	název místnosti	užitná plocha m ²
11.01	vstupní hala	12,4
07.01	toaleta	2,0
03.01	obývací pokoj + kk	32,9
05.01	ložnice	14,6
05.02	ložnice	15,7
08.01	koupelna + toaleta	7,0
14.01	komora	1,9
17.01	balkon	5,9
17.02	balkon	3,9



Lucie Dušková
Real Estate Manager

+420 731 544 904
duskova@homeland.cz