



Apartment 1 Bed

Praha 10 - Vršovice, Kubánské náměstí

PRICE	PROPERTY	CODE	FLOOR	AREA	TERRACE	PARKING
313.701 EUR	ID 1210	A211	2/5	78 m ²	No	No



Two-room apartment in Prague 10 - Vršovice. An elegant loft apartment on the first floor of an architecturally unique industrial residence in the heart of Prague's Vršovice offers exclusive modern living in a sought-after location in the wider center of the capital.

The apartments are characterized by the above-standard quality of the materials used and an originally designed two-story interior with a ceiling height of almost five meters with the use of a residential gallery. The interior of the apartment consists of a well-lit living room with a kitchenette and a dining area, living floor forming a bedroom, a bathroom with a toilet and a shower, a dressing room and an anteroom.

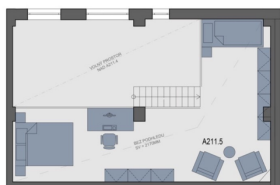
Standards include high-quality laminate floating floors in oak, white bathroom fixtures using ceramics, steel and cast marble, elegant large-format gray bathroom tiles, plastic or aluminum windows and balcony doors with thermal insulation triple glazing, and fireproof entrance and panel rebate interior doors. In addition, a generous marble staircase with a steel railing surrounds the timeless glass elevator runs through the house. It is possible to purchase a cellar space for the apartments at a price of CZK 75,000 / sqm.

The premium location of Nové Vršovice in the wider center of the capital carries excellent accessibility and civic amenities. There are many tram and bus stops in the area with countless public transport lines and the Prague - Eden train station.

In the vicinity you will find many schools and kindergartens, doctor's offices, Vinohrady Hospital, offices, shops, Eden shopping center, cafes, bars and restaurants. For leisure, there are also a number of cinemas and theaters, regular farmers markets on Kubánské náměstí, Slavia - Eden sports complex, Čechovo náměstí and the Grébovka romantic park known for their rich cultural life and various events, or Heroldovy sady with Vršovice chateau.

Completion planned Q2/2024.

Kubánské náměstí 1333/6
10100 Praha 10 - Vršovice



PŮDORYS PODLAŽÍ



POHLED NA DŮM



3 + kk 2. NP S Energetická náročnost budovy: G

A211.1	Předsíň	3.36 m²
A211.2	Koupelna	5.57 m²
A211.3	Šatna	4.31 m²
A211.4	Obývací pokoj + kk	34.65 m²
A211.5	Obytné patro	29.87 m²
Vnitřní užitná plocha		77.76 m²
Celková podlahová plocha		79.67 m²

Parkovací stání

Ne

Uvedená vyobrazení mají pouze ilustrativní charakter a nemusí zcela odpovídat stavebnětechnickému řešení bytu. Zařízení a vybavení nejsou součástí dodávky.



Lucie Dušková
Real Estate Manager

+420 731 544 904
duskova@homeland.cz