



Retail space

Prague 10 - Žižkov, Ramonova

PRICE PER M ²	PROPERTY	TOTAL AREA	PARKING	PRICE FOR SERVICES (M ²)
15 EUR	ID 1135	3 230 m ²	135 EUR	0 EUR



Exclusive retail space with an area of 1748 m² in for rent in a newly emerging modern administrative-residential complex in the Prague 10 - Žižkov district, just a few steps from the Želivského metro station.

Building standards are characterized by modern technologies and high quality materials used with an emphasis on functional design. In addition, all buildings meet the strict criteria of the LEED PLATINUM environmental certification. Parking space is available for a monthly fee of 135 euros with a service fee of 300 CZK.

The complex will offer the public more than 100,000 m² of office and retail space in a total of ten commercial and residential buildings. It will also include a unique newly planted city forest park comprising over 2,200 trees and 3 km of sidewalks connected to the city's bike paths. There will also be all the services, shops, restaurants and cafes lining the central pedestrian boulevard or the cultural and social center with a multifunctional hall, which will become the new seat of the PKF Symphony Orchestra - Prague Philharmonia.

Excellent transport accessibility by public transport, the complex is located directly at the busy transport hub Želivského with a metro station and several bus and tram stops. The ring road is just a 10-minute drive away. There are also all civic amenities in the wider center of the capital. Here you will find offices, shops, services, restaurants, bars, the Atrium Flora shopping center, as well as a number of parks and opportunities for cultural and sports activities.

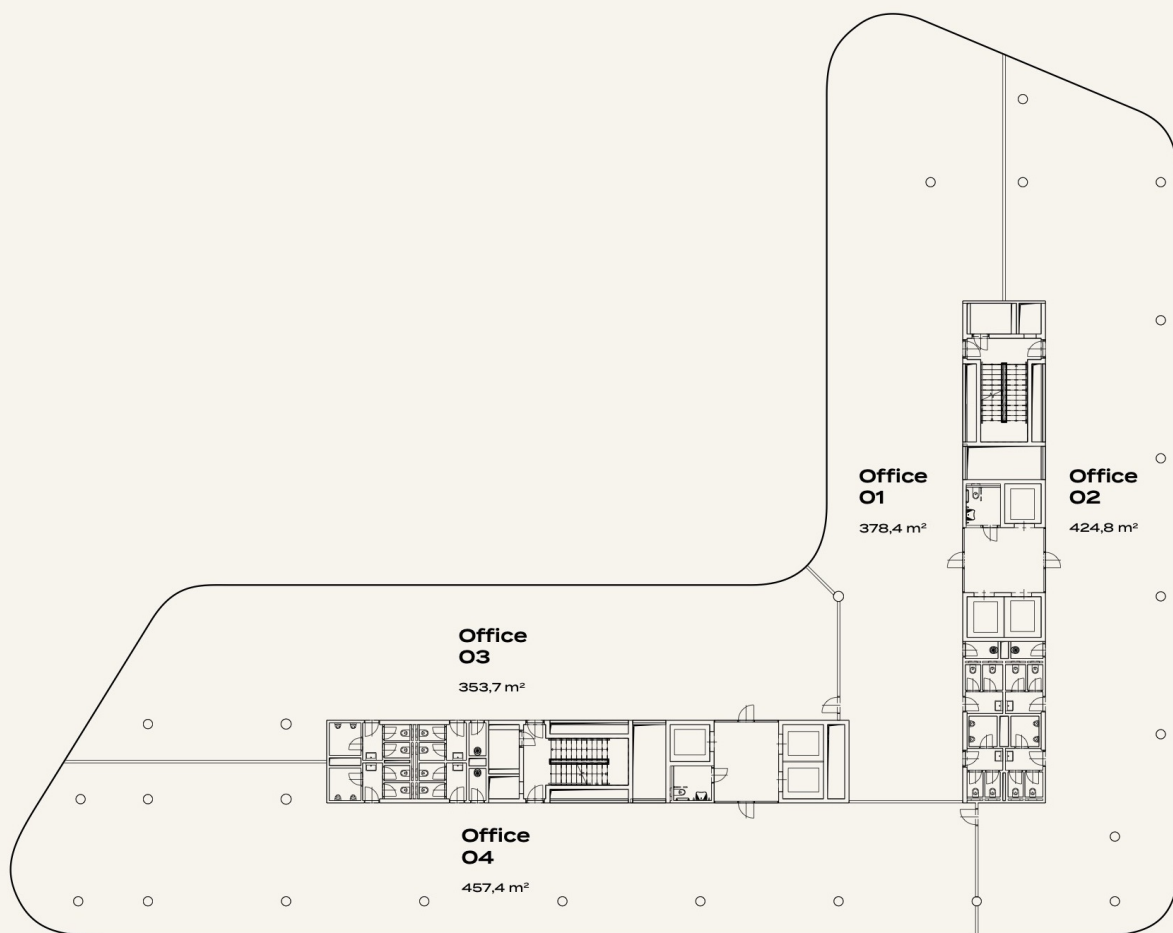
Standards:

- smart elevators,
- charging stations for electric cars,
- active cooling beams,
- smart blind control,
- 5G network coverage,
- double floors with built-in drawers,
- ceilings with LED lighting,
- green roofs of buildings,
- changing rooms and showers,
- telephone and data connection,
- use of rainwater,
- parking ratio 1:77.

Completion of the first stage of office buildings is scheduled for Q1 / 2024. For more information about the project and other free units, do not hesitate to contact us.



Ramonova 3466/2
100 00 Prague 10 - Žižkov



Lucie Dušková
Real Estate Manager

+420 731 544 904
duskova@homeland.cz