



Apartment 2 Bed

Prague 10 - Vršovice, Na Spojce

PRICE FROM	PROPERTY	CODE	FLOOR	AREA	TERRACE	PARKING
908.580 EUR	ID 1038	35	6/8	76 m ²	24 m ²	No



Elegant duplex located on the sixth and seventh floors of an Art Nouveau residence from the second half of the 19th century after a complete careful reconstruction. It offers exceptional living combining the charm of the past of Staré Vršovice with the comfort of modern life in the wider center of Prague.

The layout of the first floor consists of a master bedroom, children's room, separate toilet, shared bathroom and staircase hall. Upstairs there is a spacious living room with kitchenette, dining area and access to a large terrace of 24 sqm. The apartment also has a cellar.

Standards include hardwood floors, marble and stone tiles, ceramic bathroom fixtures and elegant steel staircases in attics or wooden or all-glass interior doors. The apartment is characterized by a refined design emphasizing the cosiness and practicality of living. It is sold unfurnished, but for an additional fee it is possible to equip it with a kitchen unit and built-in wardrobes.

The location of the wider center of the capital brings excellent accessibility and civic amenities, in the vicinity there are many tram and bus stops with countless public transport lines and the train station Prague - Vršovice.

In the vicinity you will find schools and kindergartens, doctor's offices, offices, shops, Eden shopping center, cafes, bars and restaurants. For leisure, there are also a number of cinemas and theaters nearby, Krymská Street, Čechovo náměstí and the romantic Grébovka Park, known for its rich cultural life and various events, and Heroldovy sady with the Vršovice Chateau.

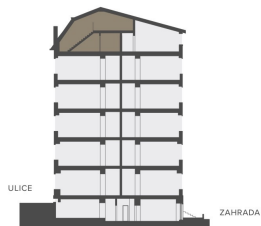
Completion of the project is planned for Q4 2023. For complete information about the project and vacant housing units for rent, do not hesitate to contact us.



Na Spojce 643/2
10100 Prague 10 - Vršovice

Řez domem

Pozice bytu v rámci domu



Půdorys podlaží

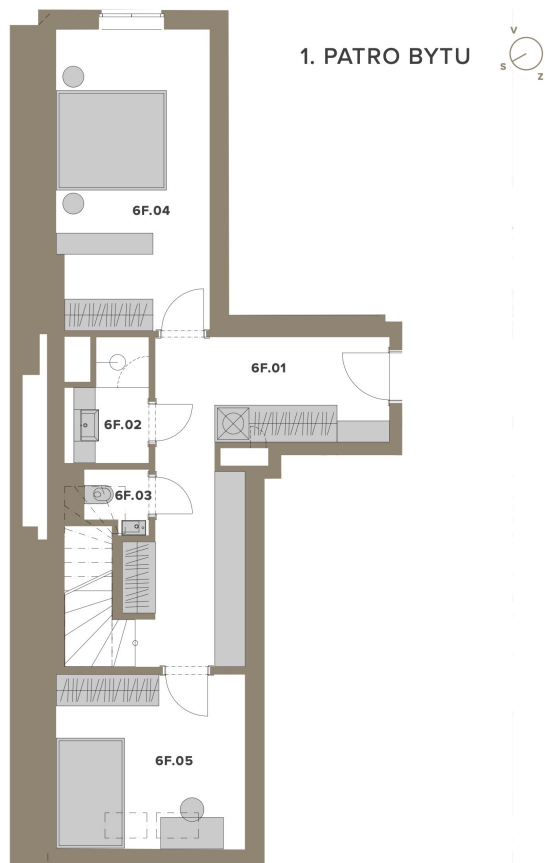
Umístění bytu na patře



6F.01	HALA SE SCHODIŠTĚM	20,1 m ²
6F.02	KOUPELNA	3,1 m ²
6F.03	WC	1,4 m ²
6F.04	LOŽNICE	16,6 m ²
6F.05	POKOJ	12,0 m ²
6F.06	OBÝVACÍ POKOJ S KUCH. KOUT.	22,9 m ²
	SVISLÉ KONSTRUKCE	7,1 m ²
PODLAHOVÁ PLOCHA		83,2 m²
6F.07	TERASA	23,5 m ²
0.6F	SKLEP	2,1 m ²
PLOCHA CELKEM		108,8 m²

Podlahová plocha bytu dle nařízení vlády č. 366/2013 Sb. znamená celkovou plochu všech místností bytu a také plochy pod nosnými i nenosnými zdmi, přízděvkami a jádry (zde označené jako svislé konstrukce). Jedná se o plochu, která je vymezená obvodovými zdmi bytu. Plochy jednotlivých místností jsou pouze orientační. Vybavené zařízení v plánech bytů (nábytek, kuch. linka, el. spotřebiče atd.) není součástí dodávky. Rozsah dodávky je specifikován ve standardu. Investor si vyhrazuje právo na drobné úpravy.

1. PATRO BYTU



Lucie Dušková
Real Estate Manager

+420 731 544 904
duskova@homeland.cz